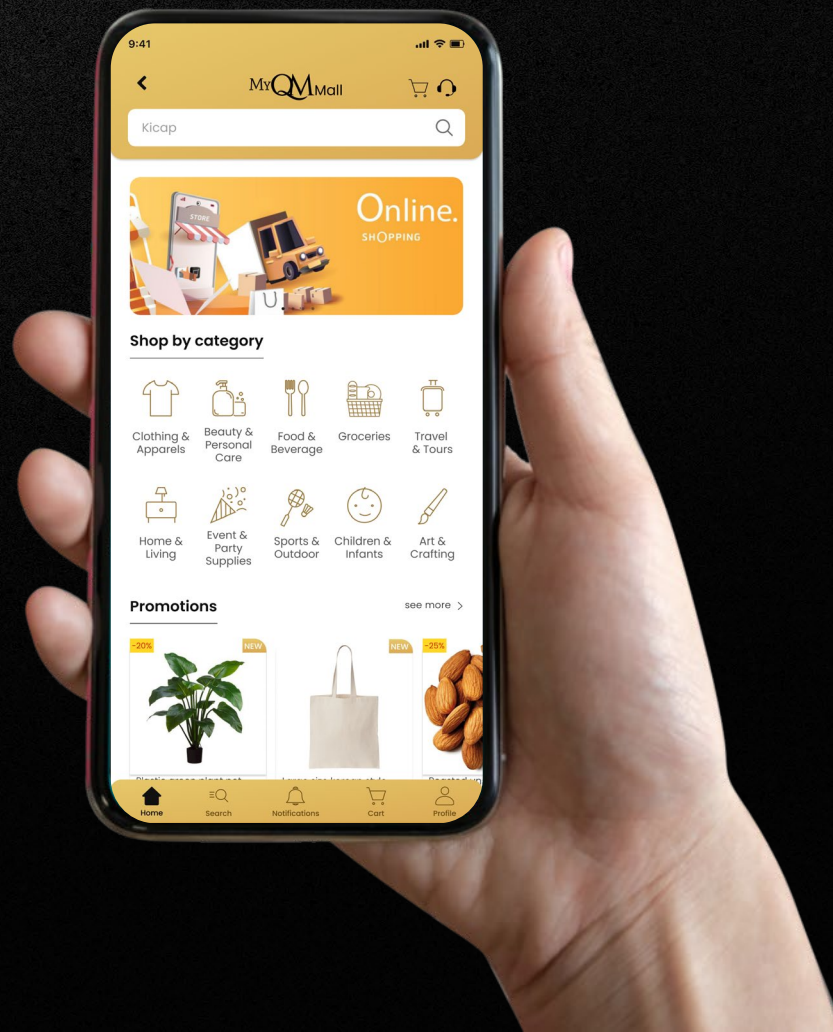


MyQM Mall Seller

Introduction



Contents

	Title
1	Who are we?
2	Who can sell?
3	Who is our Target Market?
4	Why join us?
5	Customers ready to spend
6	Commission Fees
7	Transaction Fees
8	Items can and can't be sold
9	Seller onboarding flow
10	User ordering flow
11	Seller Fulfilment Process Flow
12	Seller Payment Timeline

1 Who are we?

At MyQM Mall, we are a Marketplace Platform (e-commerce) which provides a digital platform for multiple sellers to offer their products directly to buyers. With years of digital experience, we strive to bring a fast and secure e-commerce shopping experience for both buyers and sellers.

With an existing 650,000 number of active Quantum Metal Users across Malaysia and growing, sellers will have the potential to reach out to potential buyers immediately.

Join us today to promote your products and services locally, while we continue to grow the platform globally.



More than
650K
Quantum Metal
Active Members

Subsidiary of



2 Who can sell?



Company & Brand Seller

- Include small, medium, and large businesses, as well as established brands.
- Require proper business documentation like SSM.
- Offer a wider range of products with established branding.
- Ideal for businesses seeking to expand their online presence and reach a larger customer base.



Individual Seller

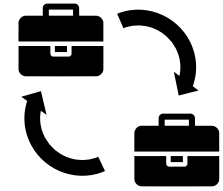
- Typical individuals selling products online
- Can register easily without extensive business documentation.
- Operate their own online store independently.
- Often focus on selling a limited range of products.
- Suitable for those looking to start a side business or earn extra income.

3 Who is our target market?

To all our
650k active
users in
Malaysia.



**Business to
consumer
(B2C)**



**Business to
business
(B2B)**

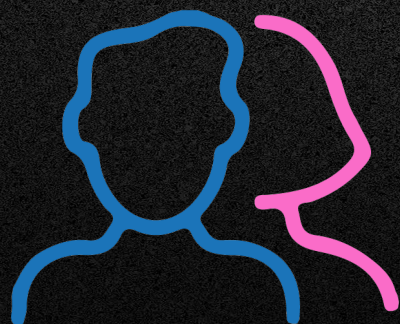
+

- Direct marketing opportunities.
- Large member consumer base.
- Convenient shopping for individuals.

+

- Larger Order Volumes for businesses
- Market Expansion
- Streamlined Procurement

Our Current User Demographics



45%
MALE

55%
FEMALE



15% aged 14-24

72% aged 25-54

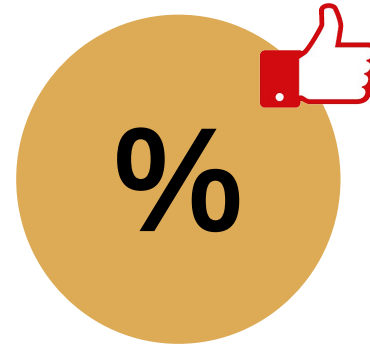
12% aged 55-64

**Consumers aged 25-54 represent a key demographic for e-commerce, as they are more likely to engage in online shopping and have significant purchasing power.*

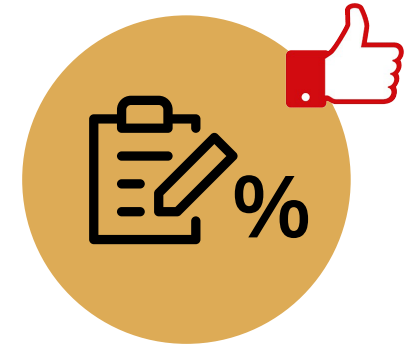
**Female consumers also tend to be more active in e-commerce shopping.*

4

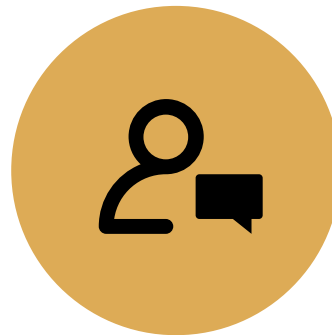
Why join us?



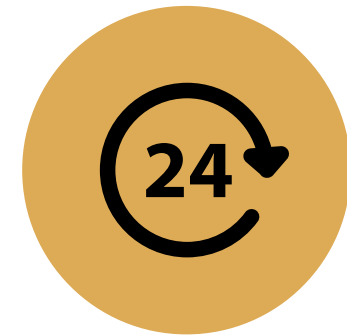
**Input your own
Platform Commission
Offering ***



**Commission Offering by
Individual Product**

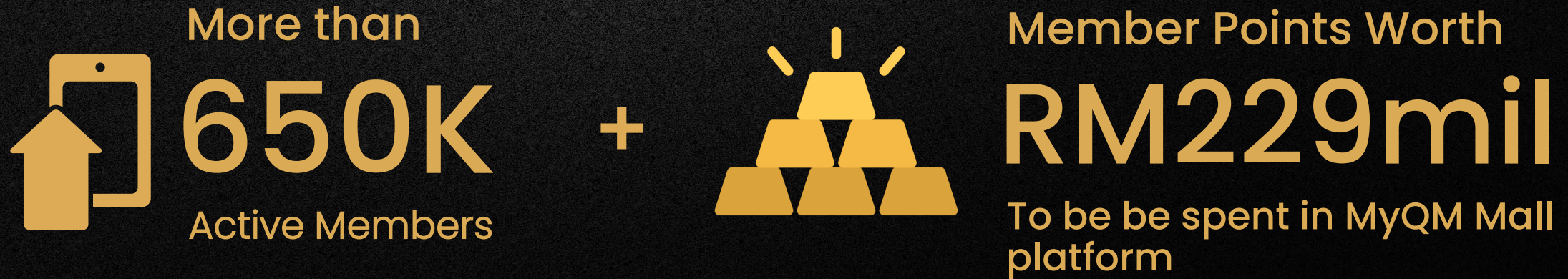


**Expanding your reach
to new customers**



**24/7 platform
availability**

5 Customers Ready to Spend



- Join us today to enjoy the immediate organic reach and purchases!
- Offer an attractive discount to attract more buyers to your store.
 - Zero listing fees !
 - Zero Marketing Cost !

6 Commission Fees

You make the offer !

Unlike other platforms, we at MyQM Mall understand your business needs. Hence you are able to input your own Commission rate* by "INDIVIDUAL PRODUCTS" (not 1 commission for entire shop)

Minimum requirement of **9%** only

Commission rate will translate to user discounts. The more discounts offered, the more buyers.

How is Commission Fee calculated?

- The commission fee will be charged on your product price, after deducting all Seller Discounts and Seller Vouchers.
- Seller Discounts refer to item rebates provided by sellers while Seller Vouchers refer to all seller-borne vouchers.

Commission Fee =
(Item price – Seller Discounts – Seller Vouchers) * Commission Rate

**The commission fee will be subjected to 8% SST from 1 March 2024 onwards.*

- The commission fee charged will be deducted directly from the sellers' payout.

Payment Cycle: Weekly Payment Cycle (withdrawal)

** Withdrawal cutoff every Monday and Thursday, payout within 5 working days**

** MyQM Mall reserves the rights to change the commission fees from time to time*

7 Transaction Fees

MyQM Mall Transaction Fee

Transaction Fees of **2.00%** is charged to cover the payment gateway fees that apply to all online transactions by the payment gateway upon any and all successful orders by Buyers.

How is Transaction Fee calculated?

- Transaction Fee is calculated at **2%** of the final amount paid by Buyer before any MyQM Mall platform discounts, rounded up to 2 decimal points.

Transaction Fee

= (Item price (before any MyQM Mall platform discounts) – Seller Discounts – Seller Vouchers + Shipping Fees paid by Buyer including SST) * 2%

- The transaction fee charged will be deducted directly from the sellers' payout when the order is completed.

Onboarding

MyQM Mall Seller



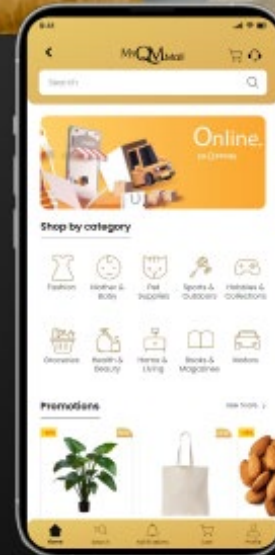
Join us as a
MyQM Mall Seller

Grow your online business
with us



Register now!

Register now at myqm2u.com/seller/



8 What items can or can't be sold?

✓ Can

Products that are **in demand, lightweight, easy to ship**, and cater to **specific interests or trends** are suitable for selling.



Clothing & Apparels



Beauty & Personal Care



Food & Beverage



Groceries



Travel & Tours



Home & Living



Event & Party Supplies



Sports & Outdoor



Children & Infants



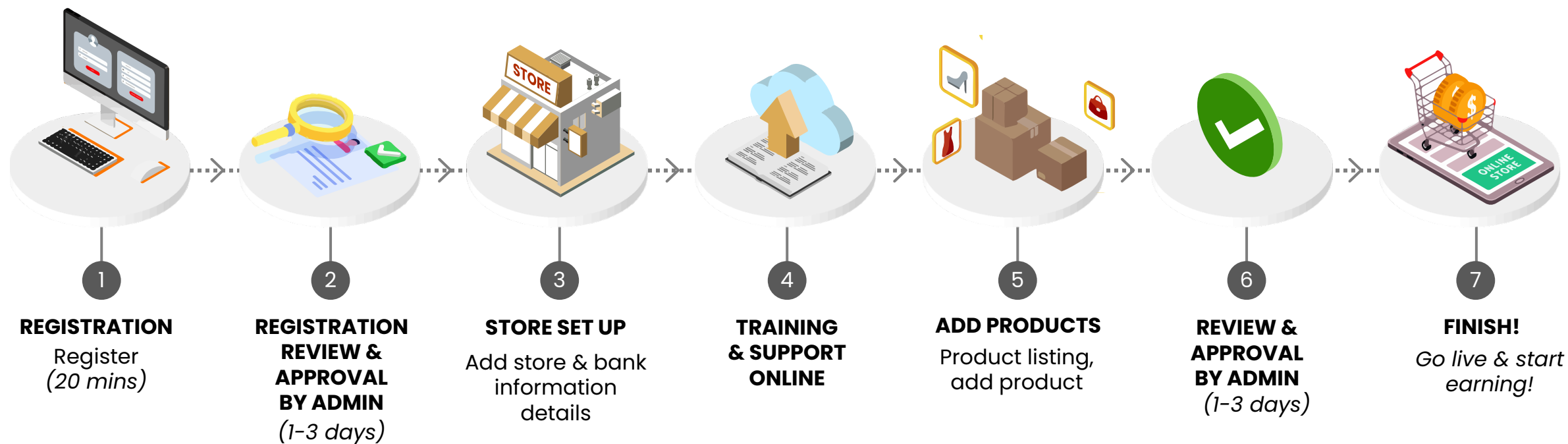
Art & Crafting

✗ Can't

Products that are **perishable, fragile, hazardous**, or **illegal** to sell online, as well as products with **extremely high shipping costs** or **low demand**, may not be suitable for selling.

For more info, visit us at <https://myqm2u.com/myqm-mall-seller-prohibited-and-restricted-items-policy/>

9 Seller onboarding flow



What's needed during registration?

1

Registered business

- Business License (SSM)
- Latest Bank statement (Containing the bank logo, acc name, and acc number)

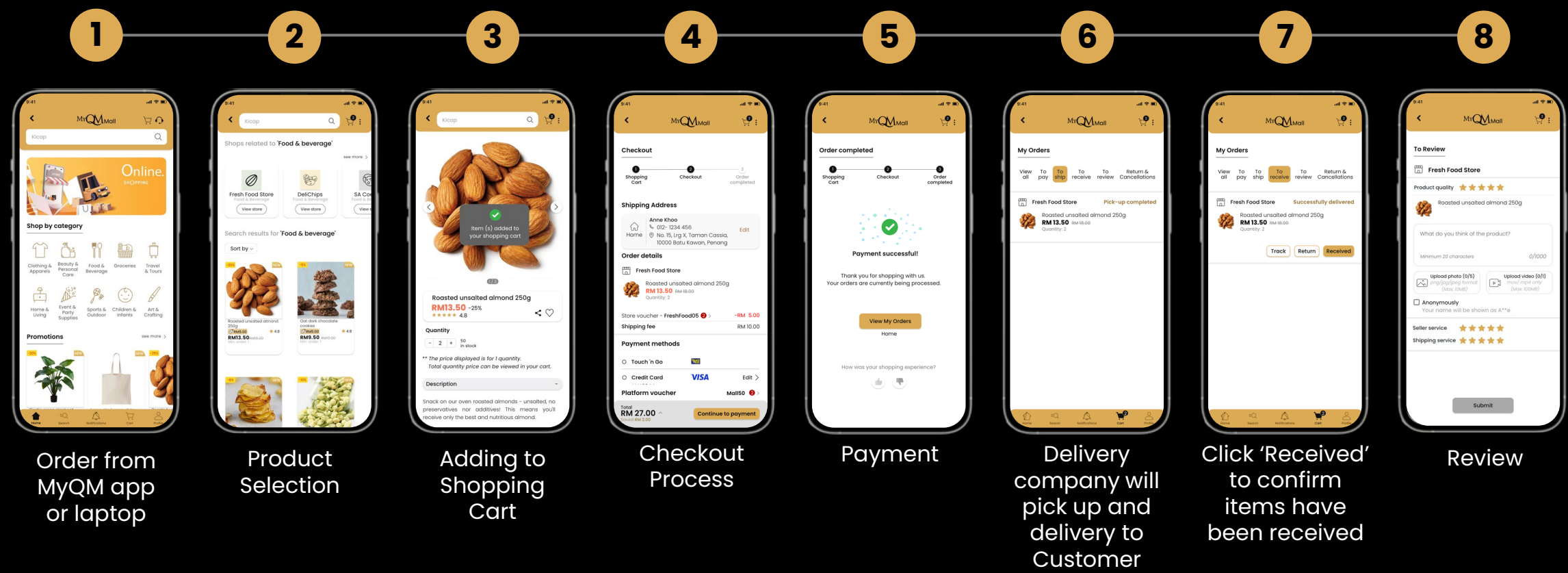
2

Personal Account *Coming Soon*

- Malaysian IC (Front & Back)
- Latest Bank statement (Containing the bank logo, acc name, and acc number)

Note: Please make sure your acc name matches your company name

10 User ordering flow



Order from MyQM app or laptop

Product Selection

Adding to Shopping Cart

Checkout Process

Payment

Delivery company will pick up and delivery to Customer

Click 'Received' to confirm items have been received

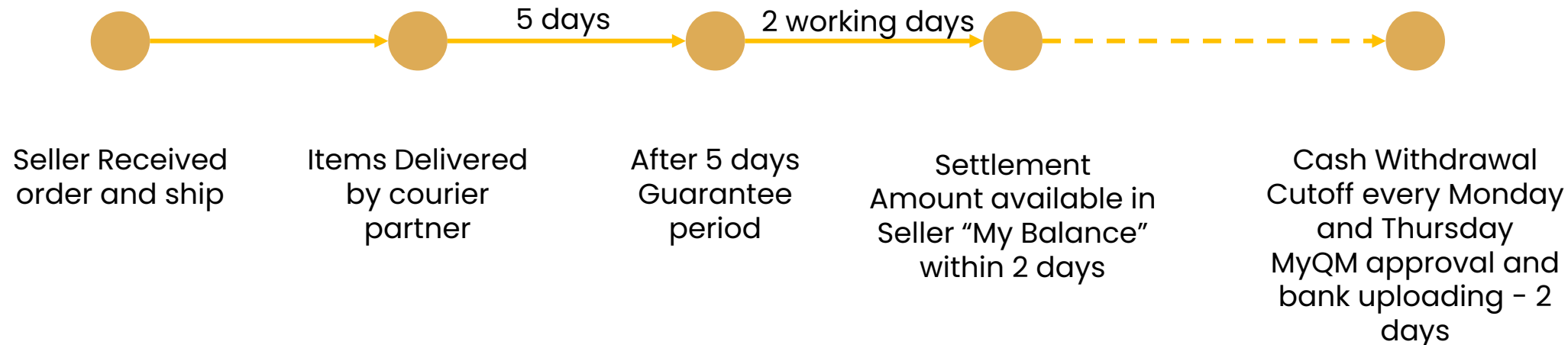
Review

11

Seller Fulfilment Process Flow



12 Seller Payment Timeline

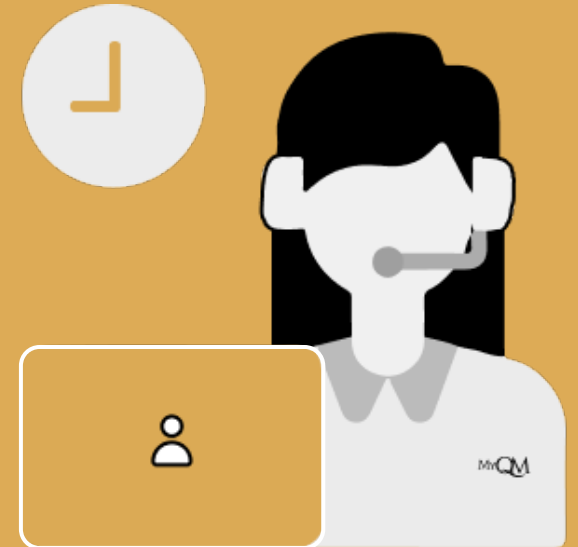


** All number of days indicates Working days

Customer service

Please contact customer service team for any enquiry or request

 **info@myqm2u.com**



For more info, visit us at <https://myqm2u.com/info-centre-seller/>.

Thank you



myqm2u



myqm2u



myqm2u



myqm2u